

April 2024

The soil stockpile for our work on flood storage areas in Somerset Levels and Moors is now operating

We are writing to let you know that we are now using a temporary stockpile next to Westonzoyland Airfield, for our work on local flood storage areas in the Somerset Levels and Moors. And also, to explain what you are likely to see in the coming months.

Why we are working at local flood storage areas

The low-lying nature of the Somerset Levels and Moors makes them prone to flooding. Flood storage areas including Southlake Moor Reservoir, West Moor Reservoir and Curry Moor Flood Storage Area (FSA) (see map below) are an integral part of the system that helps reduce the risk of flooding to homes, as well as farms and other businesses.

The Environment Agency is responsible for the safety of the reservoirs, and after inspections during 2018 and 2019, the inspector recommended several improvements for each of the reservoirs.



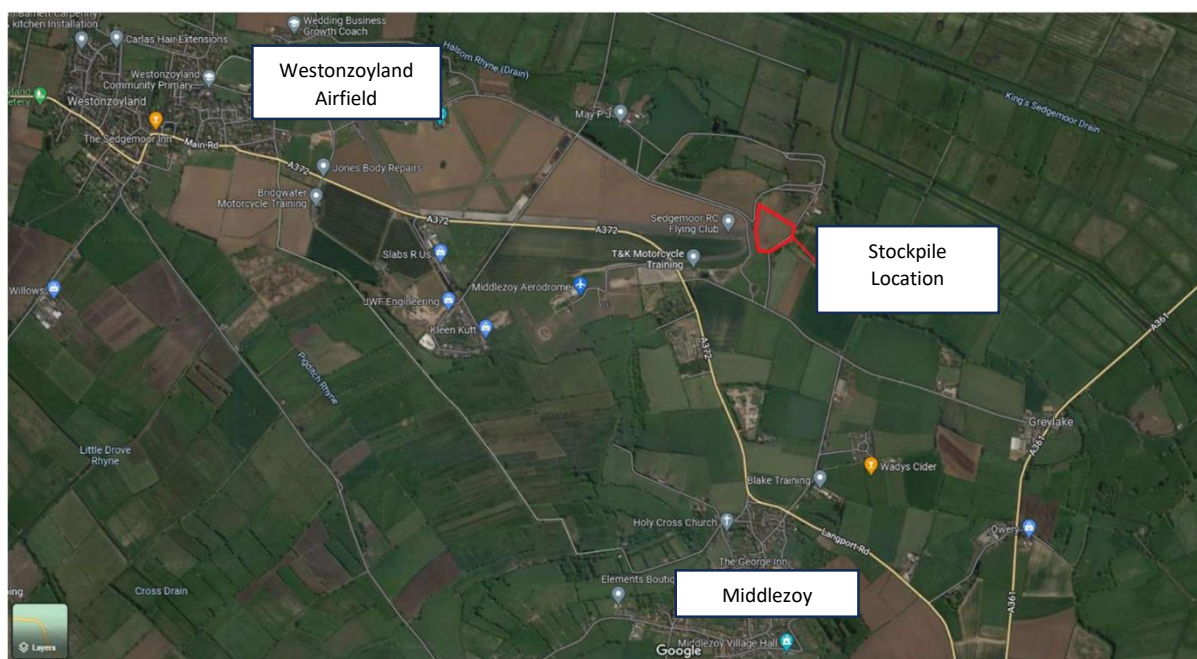
Why the stockpile is needed

Sufficient material required to construct the new embankments and spillways is not available on site to an acceptable quality and so needs to be imported. As direct access for road vehicles is not possible to a number of our work locations, we have created a stockpile where material can be deposited for onward transport using all-terrain vehicles.

Location of the temporary materials stockpile for the work

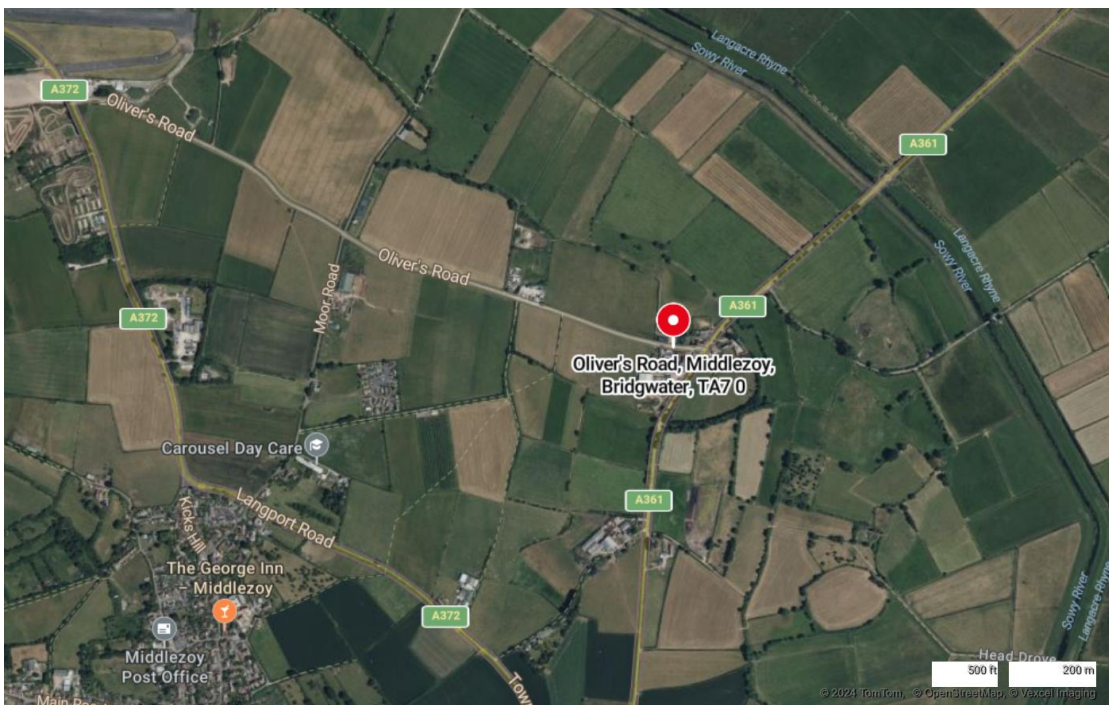
In November last year, Somerset Council granted planning permission for a temporary stockpile for this work on a site approximately 1km north of Middlezoy next to the eastern edge of Westonzoyland Airfield (see map below). We will be using it to store imported fill material, until it is needed. The material includes clay and other soils to be used in the construction works.

We've now completed preparing the site, including fencing, gates, a site compound and road access improvements and have begun using the site.



How the site will work

The site will be accessed from Oliver's Road. See the images on the next page.



There are three main routes with different volumes and types of traffic.

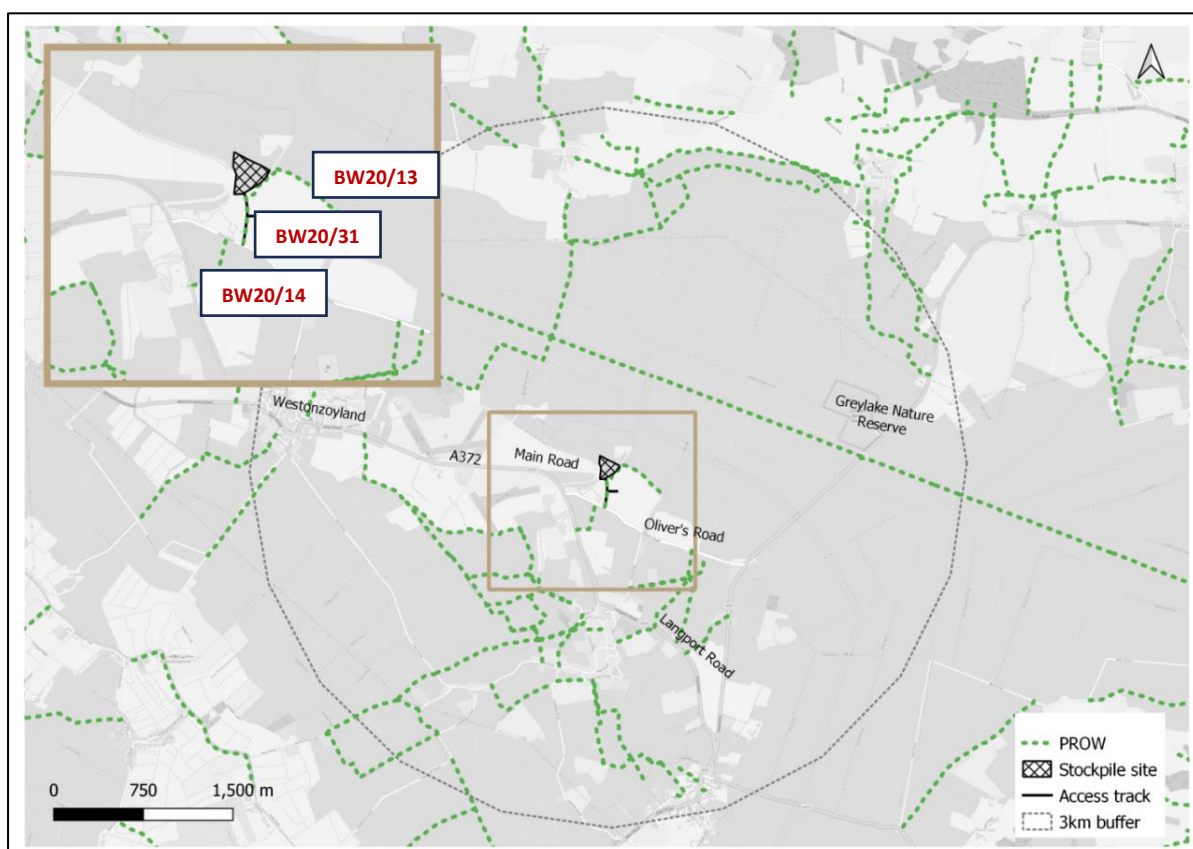
- 1) Between the source (where the soil comes from) and the stockpile** – This route will mainly have heavy goods vehicles (HGVs) such as articulated lorries and tipping trucks. At peak times there may be up to 120 HGV return trips per day carrying 500m² of fill to the stockpile site. This estimate shows the highest possible number of vehicles which will be temporary and will change depending on the weather and demand.

- 2) **Between the stockpile and each works site** – These routes will have a mix of vehicles with some having HGVs and others having only tractors and trailers. It is most likely that we will not use HGVs on Pathe Road. On the access route from stockpile to the West Moor site, we will only use smaller lorries, tractors and trailers due to weight restriction on Law Lane.
- 3) **Between the source and each works site** – These routes will mainly have HGVs.

Working hours will be between 07:30 am and 06:00 pm Monday to Friday.

Public rights of way

Footpath BW20/13 and restricted byway BW20/31 will remain open and accessible for pedestrians, cyclists, and equestrians, throughout the construction and operation of the stockpile site. See map below.



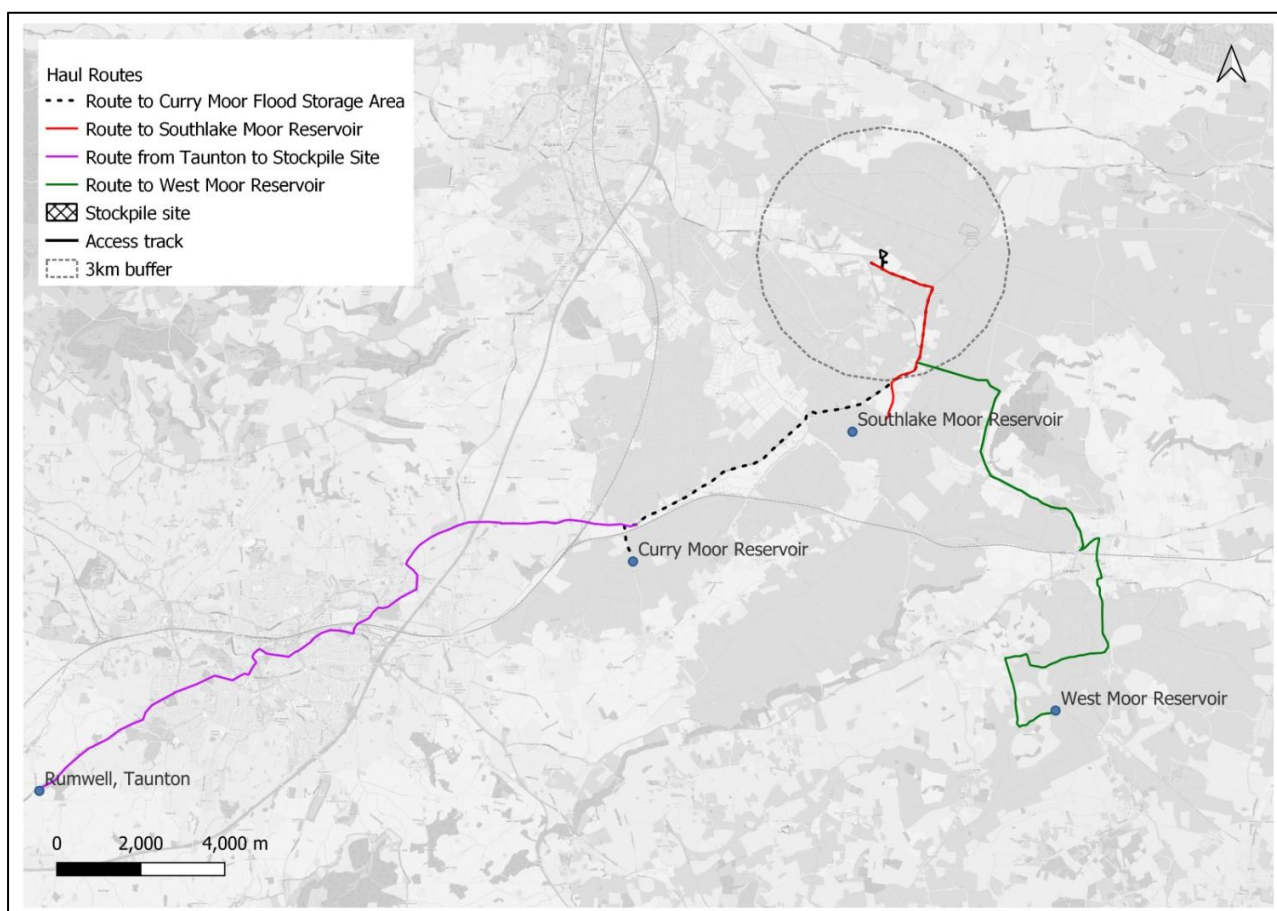
Delivery routes to and from the stockpile site

Deliveries to the stockpile site will follow the A38 and A361 from Taunton.

For deliveries from the site:

- To Southlake Moor Reservoir HGVs will use the A361 to Burrowbridge.
- To Curry Moor FSA, HGVs will travel via Oliver's Road, the A372 and New Road to reach Curry Moor FSA at the River Tone.
- To West Moor Reservoir, the smaller vehicles will pass along Oliver's Road, the A361 and east along Somerton Road to avoid the restrictions in Langport. The route then continues along the A372, The Hill, an unnamed road and Law Lane towards Drayton. The haul vehicles can then access West Moor Reservoir via East Street, Church Street, School Lane, Midelney Road and an unnamed road, that leads to Midelney pumping station. As the route directly passes Huish Episcopi Academy, hauling timetables will be managed to ensure haul vehicles avoid school pick-up and drop-off times.

The map below shows the routes for the deliveries from the site.



When our work is finished

When our work is finished, we will return the site to its current state as farmland.

Find out more

For more information about the Stockpile, contact Kier's Public Liaison Officer Claire Deacon on 07714 683609 or by email at southlakereservoir@environment-agency.gov.uk. If you have any wider questions about our work or would like to sign-up to receive scheme updates, please contact Sam Carter via the scheme email address above, or by calling our customer service line on 03708 506 506.